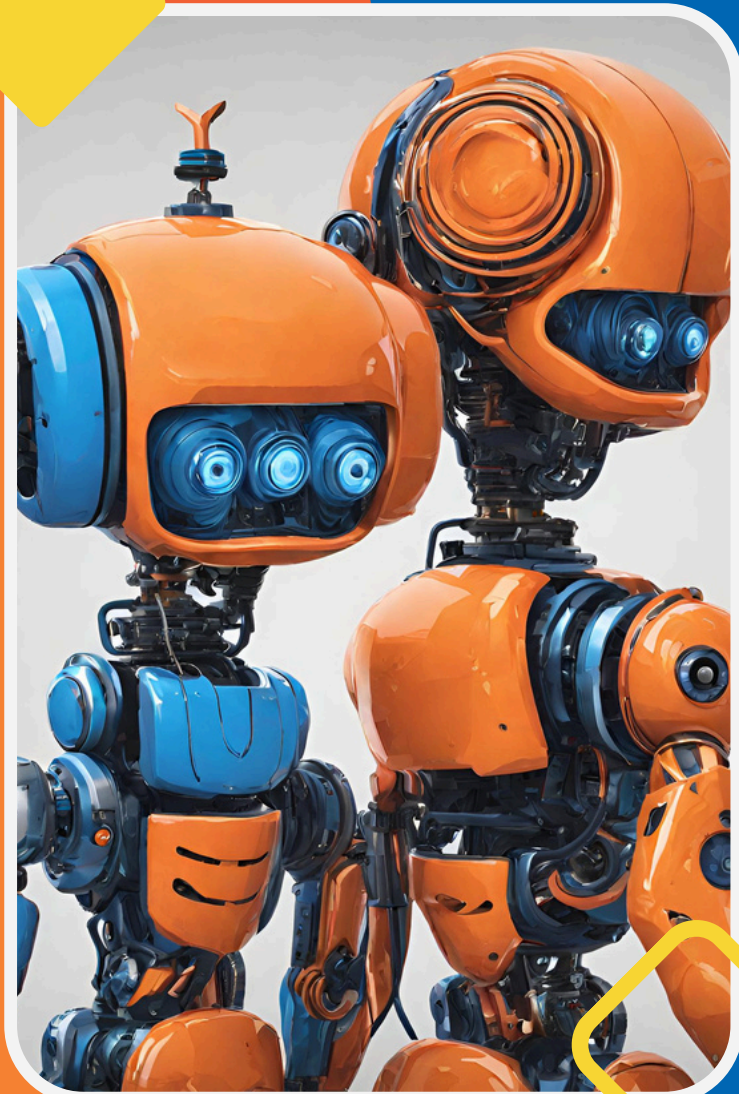


FIRST[®]
KENTUCKY ROBOTICS

FIRST TECH CHALLENGE

COMPETITION READINESS

Agenda



- ◆ Meets vs Tournaments
- ◆ Check-in & Inspections
- ◆ Robot Inspections
- ◆ Field Inspections
- ◆ What to bring & Pit Design

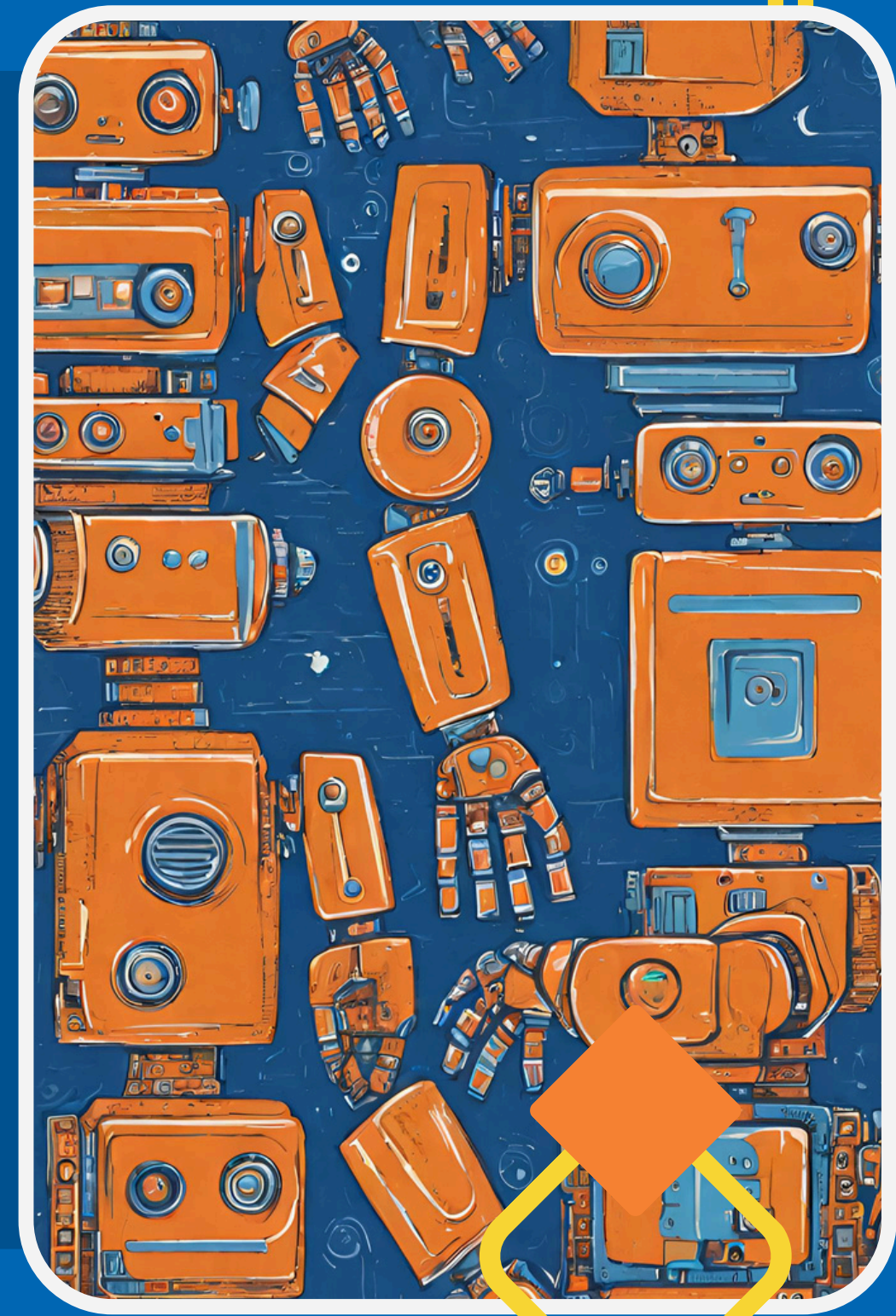
Meets vs. Tournaments or Championships

League Meets

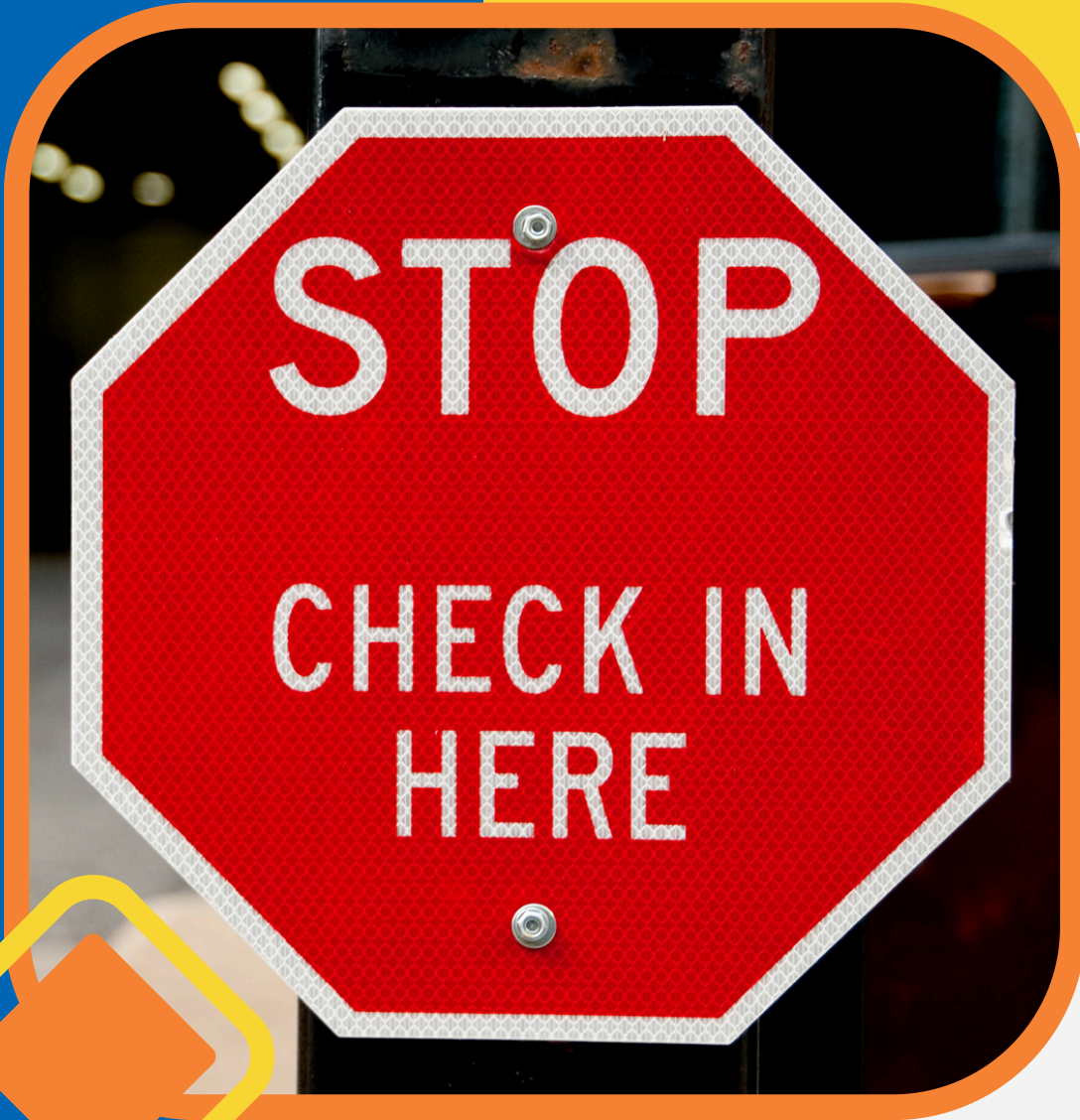
- League meets are robot games only
- No semi or final matches
- Typically 5-6 matches per team
- Local, no overnight stays

Tournaments/Championships

- Robot games & Judging
- Semi-finals and finals matches
- Longer day, typically 8am-6pm so may involve an overnight stay



Check-in & Inspections



Check-In

Robot Inspections

Field Inspections

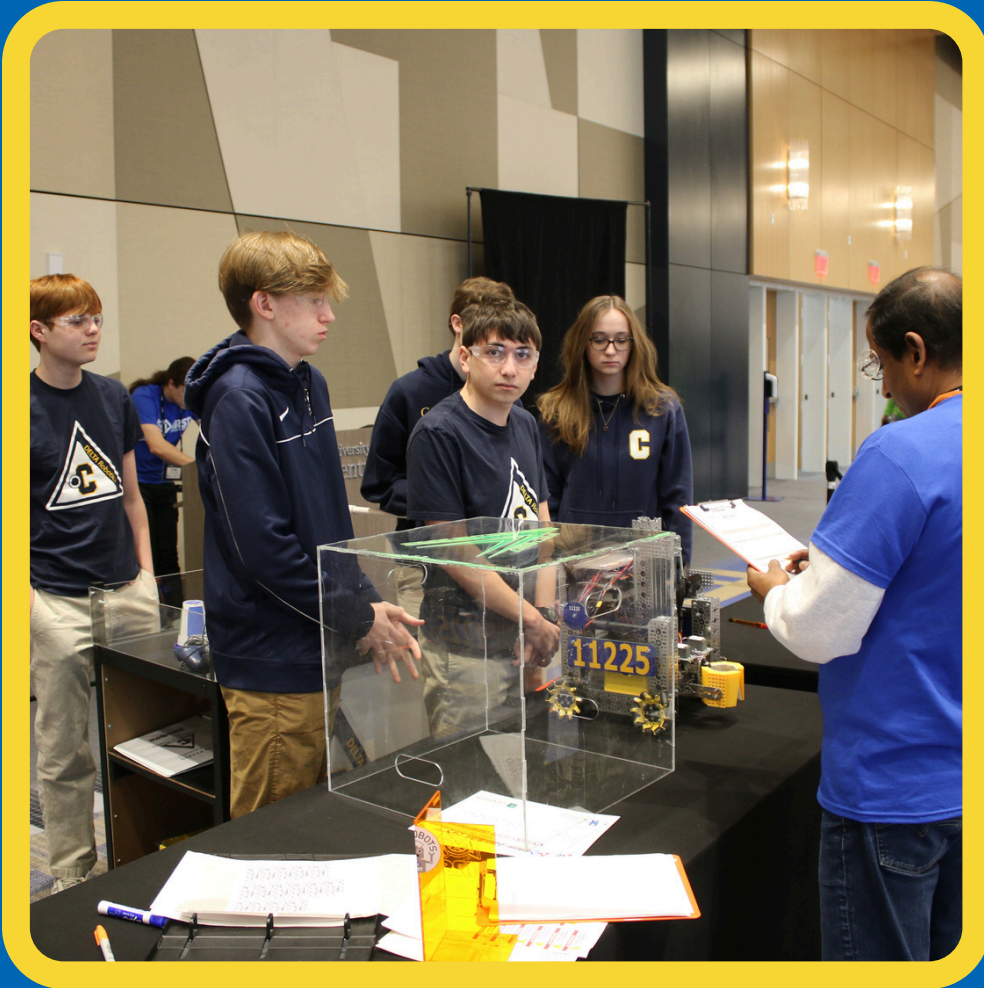


Inspections



Robot Inspections

Field Inspections



Robot Inspections

Robot Inspections will get more technical as the season goes on. It's up to each team to ensure their robot will pass inspection.



Conduct self-inspection using ROBOT INSPECTION check-list and bring that to each event



Robots must be inspected before participating in matches & re-inspected if any significant changes are made



Robots must be safe and non-destructive



Team props & Alliance Markers will be a part of this inspection



Robot Inspections

Common reasons team don't pass inspection



Team numbers must be visible on two sides of the robot (180 degrees apart) and at least 2.5" high & survive match play (not paper)



Robots must have main power switch with label (at least 1" x 2.63"



Robot must fit **INSIDE** 18" x 18" x 18" box.

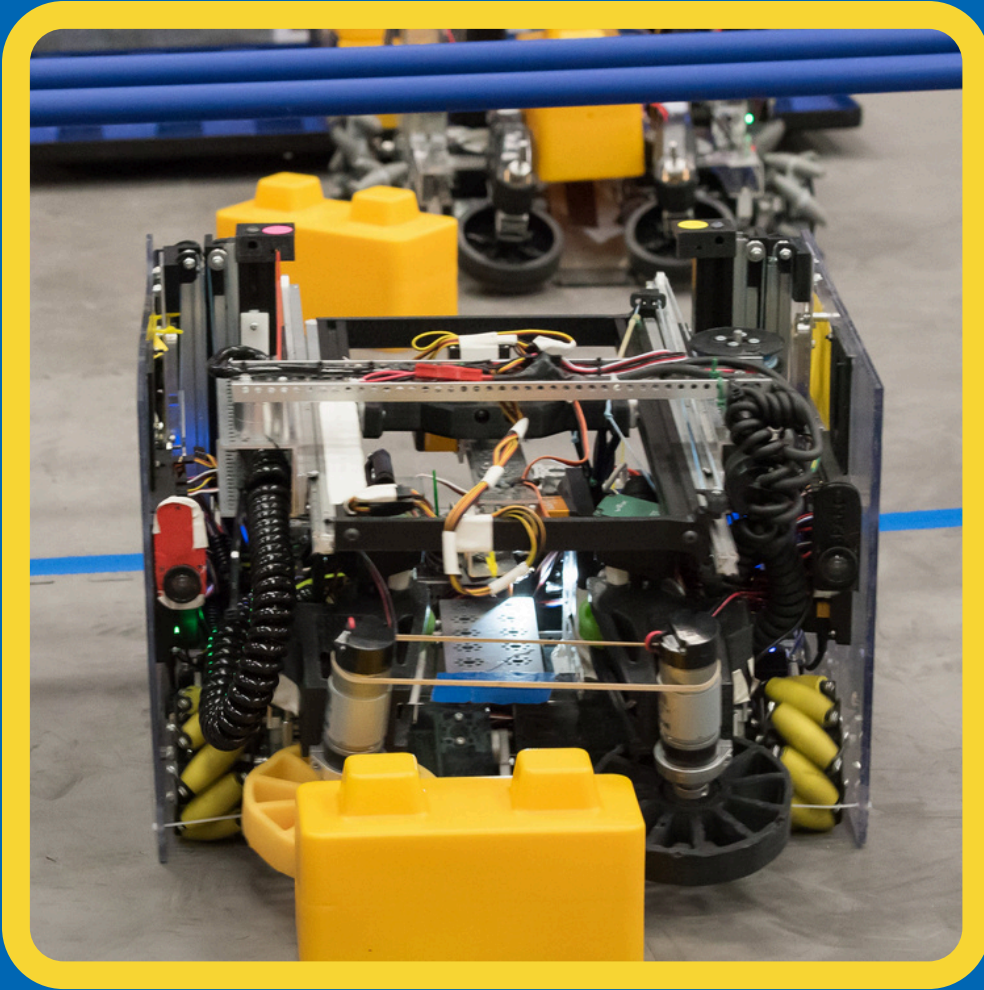


No sharp objects around the robot & no wires dangling.



Alliance markers & Team manufactured game elements must also pass inspection





Field Inspections

Field Inspections are checking on how the robot works on the field



Conduct self-inspection using FIELD INSPECTION check-list and bring that to each tournament



Run self-inspection on your driver's station and robot controller & ensure that all options have a green check-mark



Ensure you have your driver and drive coach badges and human player and media badges if applicable



The Field Inspectors will let you know the flow of the day



Teams should be able to disable robot when instructed, and robot is able to switch between teleop and driver-controlled correctly



Field Inspections

Common reasons team don't pass inspection



Robot Controller & Driver Station app versions do not match



Driver station and Robot Controller are using a supported version



Driver station must be named Team number - RC. Ex. 1111-RC



Robot Controller must be named Team number - DS. Ex. 1111-DS



RC password cannot be PASSWORD

What to Bring to Every Event Robot!

1. Cart for robot transportation
2. Extension cord & power strip
3. Extra Battery & Charging Cords
4. Alliance Markers and Team props
5. Programming Computer
6. Bin of Extra parts
7. Tool Box with basic tools
8. Team Roster from *FIRST* website (should show all members have signed consent & release forms)
9. Robot Inspection Checklist - complete
10. Field Inspection Checklist - complete
11. Safety glasses for all
12. Drive Team buttons (if you've gotten them this season)



Pit Design - League Meets



- Simple
- Quick
- Identifiable
- functional



Pit Design - Tournaments

- Be Creative!
- Work within guidelines given for the event
- Simple is also okay



Pit Design - Tournaments

Example pits seen in KY



Pit Design - Tournaments

Example pits seen in KY



Pit Design - Tournaments

Example pits seen in KY



Pit Design - Tournaments

Example pits seen in KY



Pit Design - Tournaments

Example pits seen in KY



Pit Design - Tournaments



Example pits seen in KY



Pit Design - Tournaments



Example pits seen in KY

Your Support Team

KELLI

Program Delivery
Partner-PDP

**OTHER COACHES
& MENTORS**

JEFF

Senior Mentor

HEATHER

Program Delivery
Partner-PDP

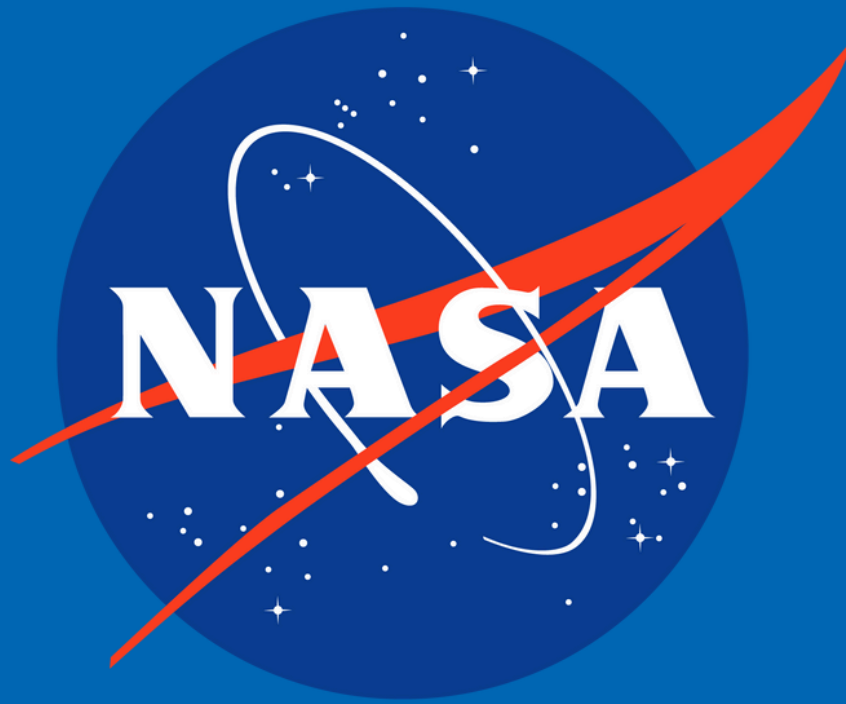
AND YOU!

AS YOUR EXPERIENCE INCREASES

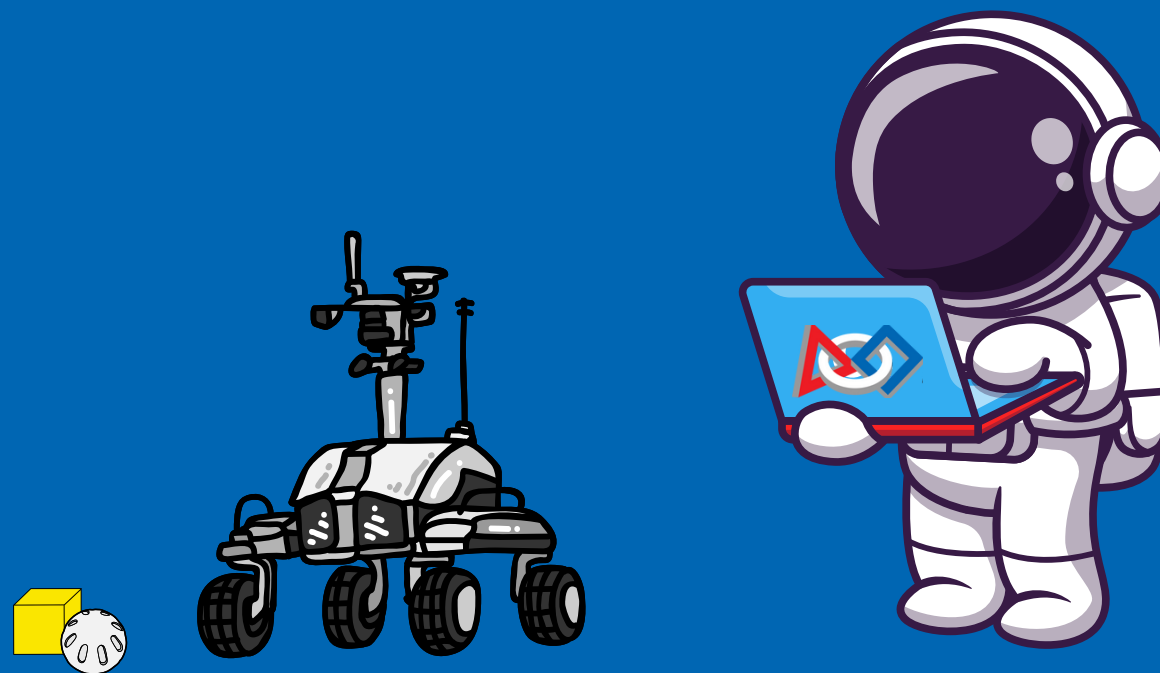
JACKIE

Senior Mentor





**The material is based upon work supported by NASA and the
Kentucky Space Grant Consortium under NASA award
80NSSC20M0047.**



GOOD LUCK!

Contact Information:

 info@kyfirstrobotics.org OR
firstname@kyfirstrobotics.org

 www.kyfirstrobotics.org
[@kyfirstrobotics.org](https://www.kyfirstrobotics.org)